



10601 Oak Street NE  
St. Petersburg FL, 33716  
Office 888-426-8511  
Fax 727-289-7126  
[www.aquaworxusa.com](http://www.aquaworxusa.com)

400 SF

AQUAWORX 400 SERIES SPLASH  
PAD  
Wet Area: DIA=23 FT

Aquaworx 400 sq.  
ft. splash pad  
package



Ground sprays,  
Main feature,  
Filtration system,  
Collector tank,  
Main Drain.

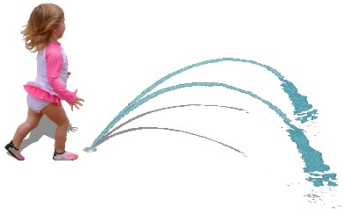
What does the Aquaworx 400 package  
include??



### 1. AQUA SPIDER

Stainless ground spray Height- 4', GPM- 10 ,  
Splash area – 10'.

---



### 2. AQUA SPLIT STREAM

Stainless ground spray Height- 2', GPM- 7,  
Splash area – 7'

---

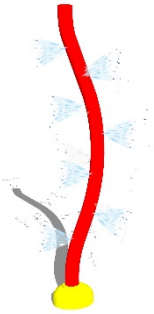


### 3. AQUA GEYSER

Stainless ground spray Height- 3', GPM - 10,  
Splash area – 6'

---

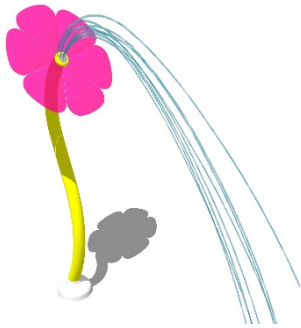
400 sq. ft. package includes  
8 ground sprays  
any combination of  
these selections.



1. AQUA SUPER  
SNAKE

7' Height , 25 GPM, 5' Splash area

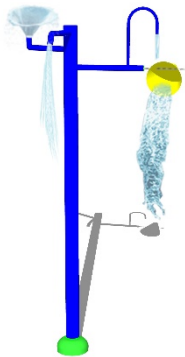
---



2. AQUA ACRYLIC  
FLOWER

10' Height, 20 GPM, 8' Splash area

---



3. AQUA TRIPLE TREE

10' Height, 20 GPM, 10' Splash area

---

400 Sq. ft. splash pad comes with 1 main feature from this selection.

1. AQUA 400  
Filtration pack

Equipment pack:

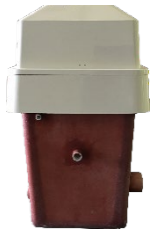
Pump, VFD, Filter, UV Sanitation System, Stenner feeders, ORP, GFI, Light, (2) Chemical crocks,  
SCH 80 PVC Manifold, Intermatic Timer/Easy start activation, 5x8 Cabinet

---

2. AT700

Vacuum Cartridge Collector Tank with ST 155 sq. ft. filters, auto fill, locking lid.

---



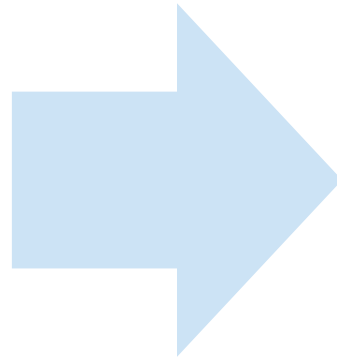
3. MAIN DRAIN

12" x 48" Unblockable Main Drain

---

All splash pad packages come with an equipment pack to run the features.

Select features and  
colors



6 to 8 weeks receive  
the entire package  
at your western U.S.  
location.

Ordering made EASY!!

## 400 Aqua Pad 1A

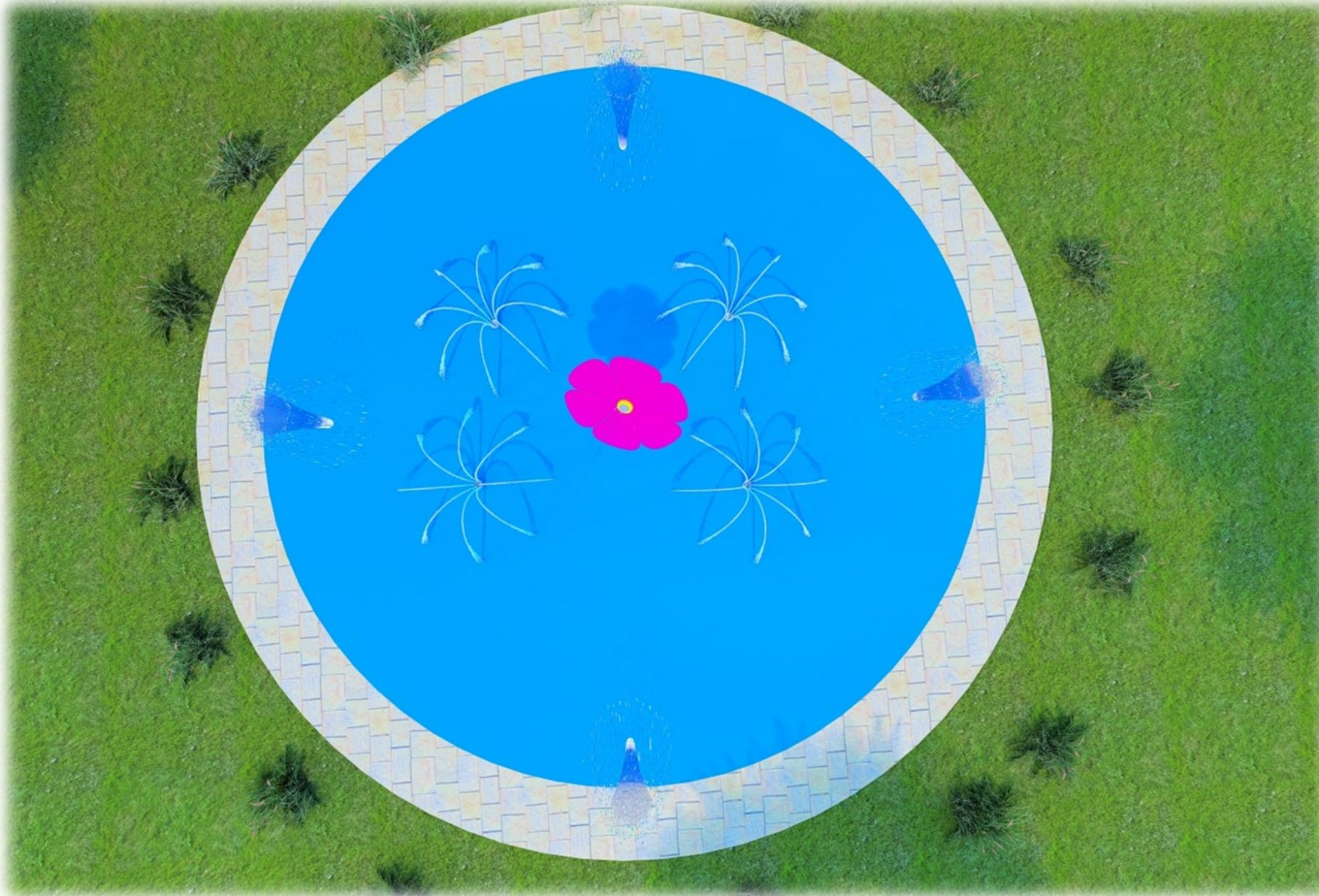


- Aqua Acrylic Flower
- Aqua Geyser (4)
- Aqua Spider (4)

Item # 400-1A



## 400 Aqua Pad 1A



- Aqua Acrylic Flower
- Aqua Geyser (4)
- Aqua Spider (4)

Item # 400-1A





## 400 Aqua Pad 1B



- Aqua Super Snake
- Aqua Spider (4)
- Aqua Split Stream (4)

Item # 400-1B



## 400 Aqua Pad 1B



Item # 400-1B

- Aqua Super Snake
- Aqua Spider (4)
- Aqua Split Stream (4)



## 400 Aqua Pad 1C

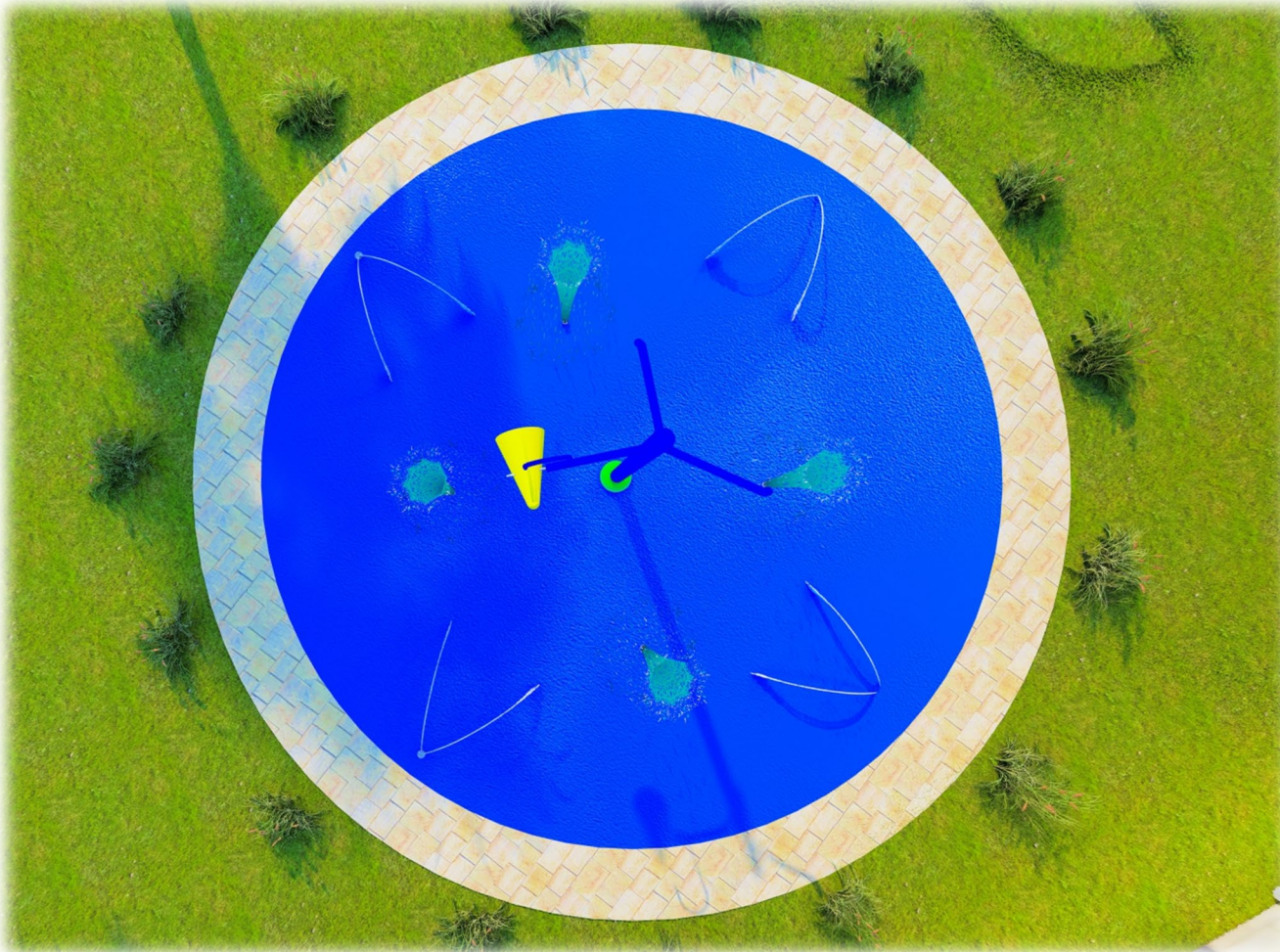


- Aqua Triple Tree
- Aqua Geyser (4)
- Aqua Split Stream(4)

Item # 400-1C



## 400 Aqua Pad 1C



Item # 400-1C

- Aqua Triple Tree
- Aqua Geyser (4)
- Aqua Split Stream(4)



## 400 Aqua Pad 2A

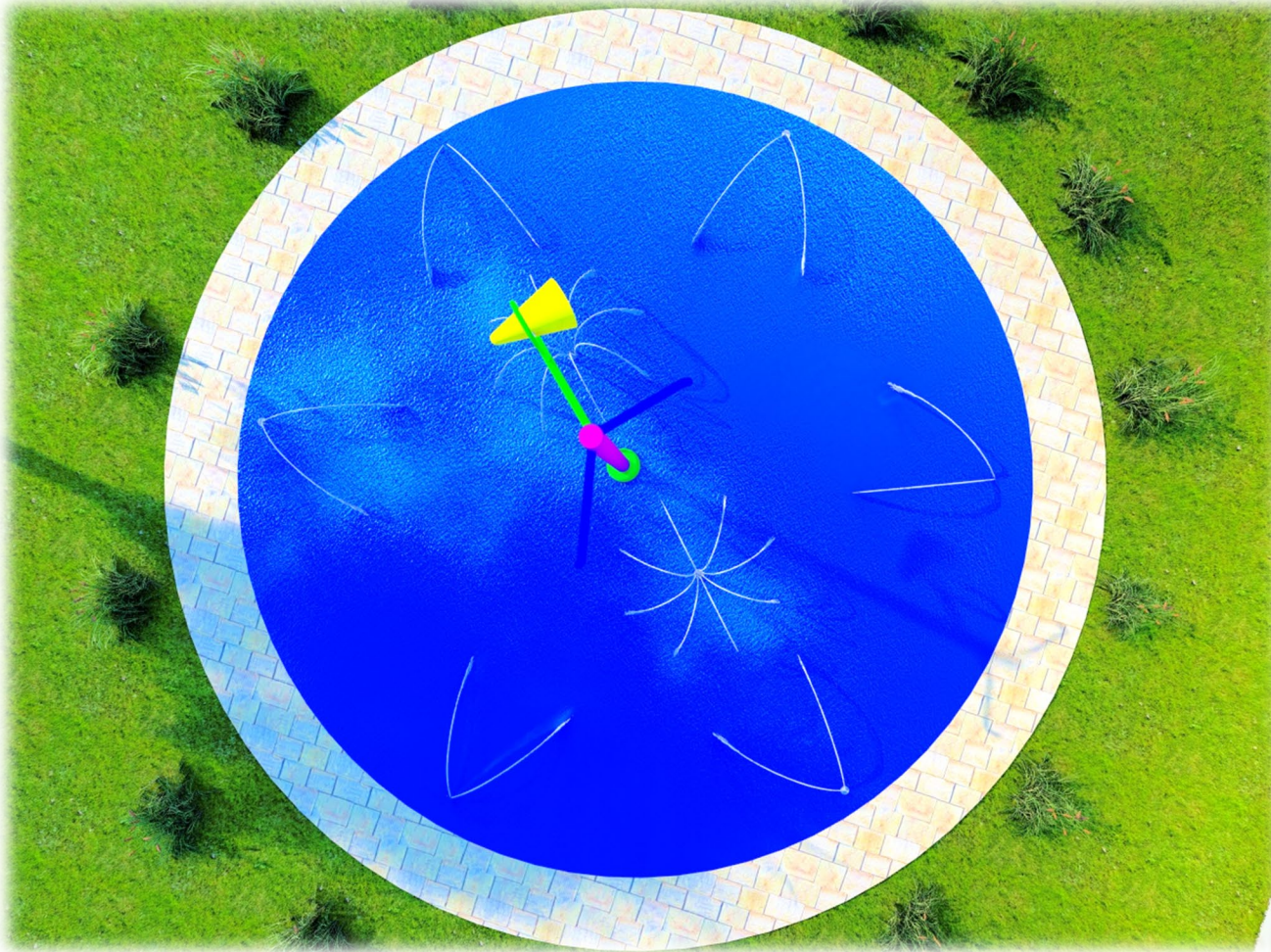


Item # 400-2A

- Aqua Triple Tree
- Aqua Split Stream (6)
- Aqua Spider (2)



## 400 Aqua Pad 2A



Item # 400-2A

- Aqua Triple Tree
- Aqua Split Stream (6)
- Aqua Spider (2)



## 400 Aqua Pad 2B

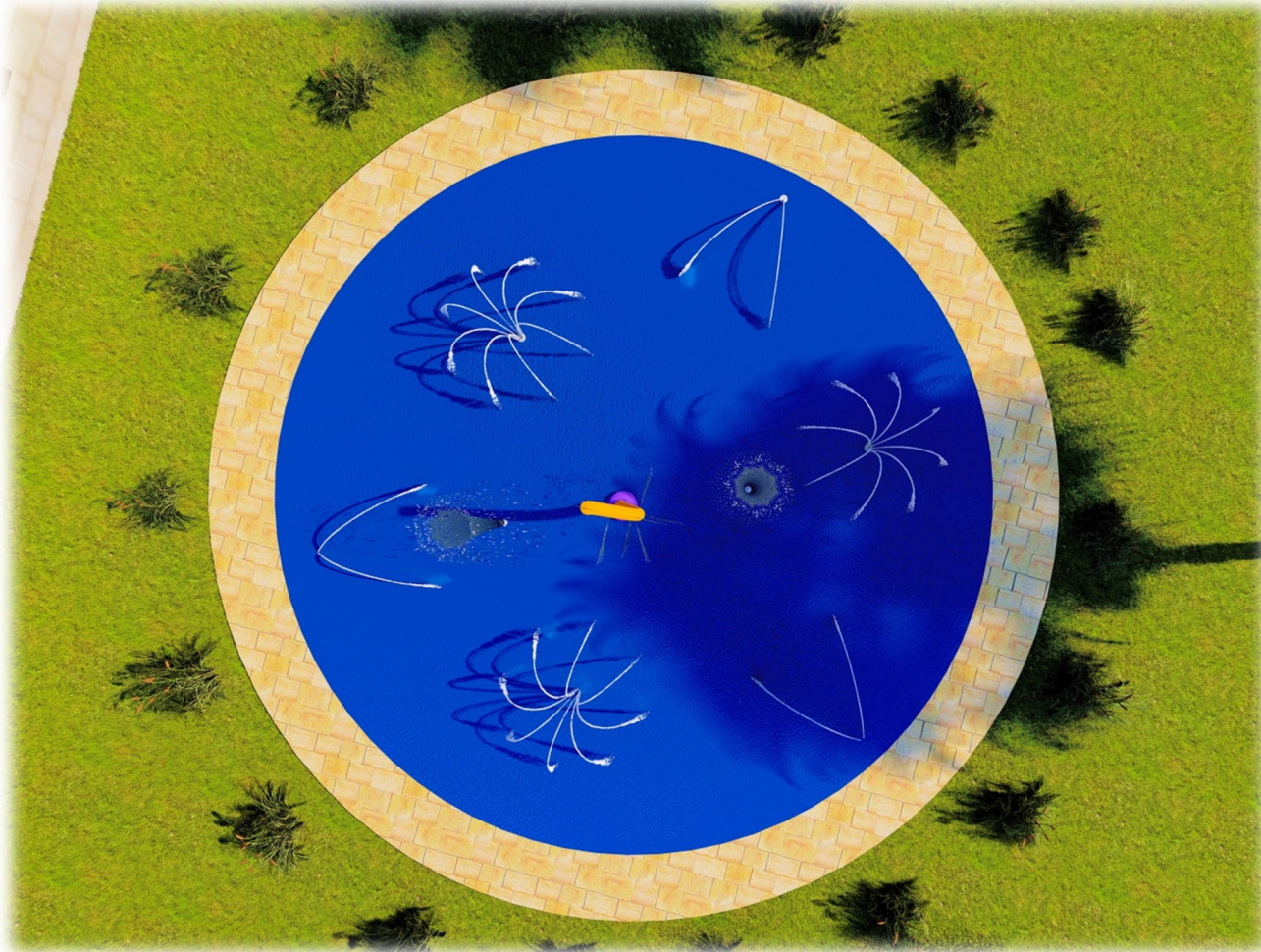


Item # 400-2B

- Aqua Super Snake
- Aqua Geysers (2)
- Aqua Spider (3)
- Aqua Split Stream (3)



## 400 Aqua Pad 2B



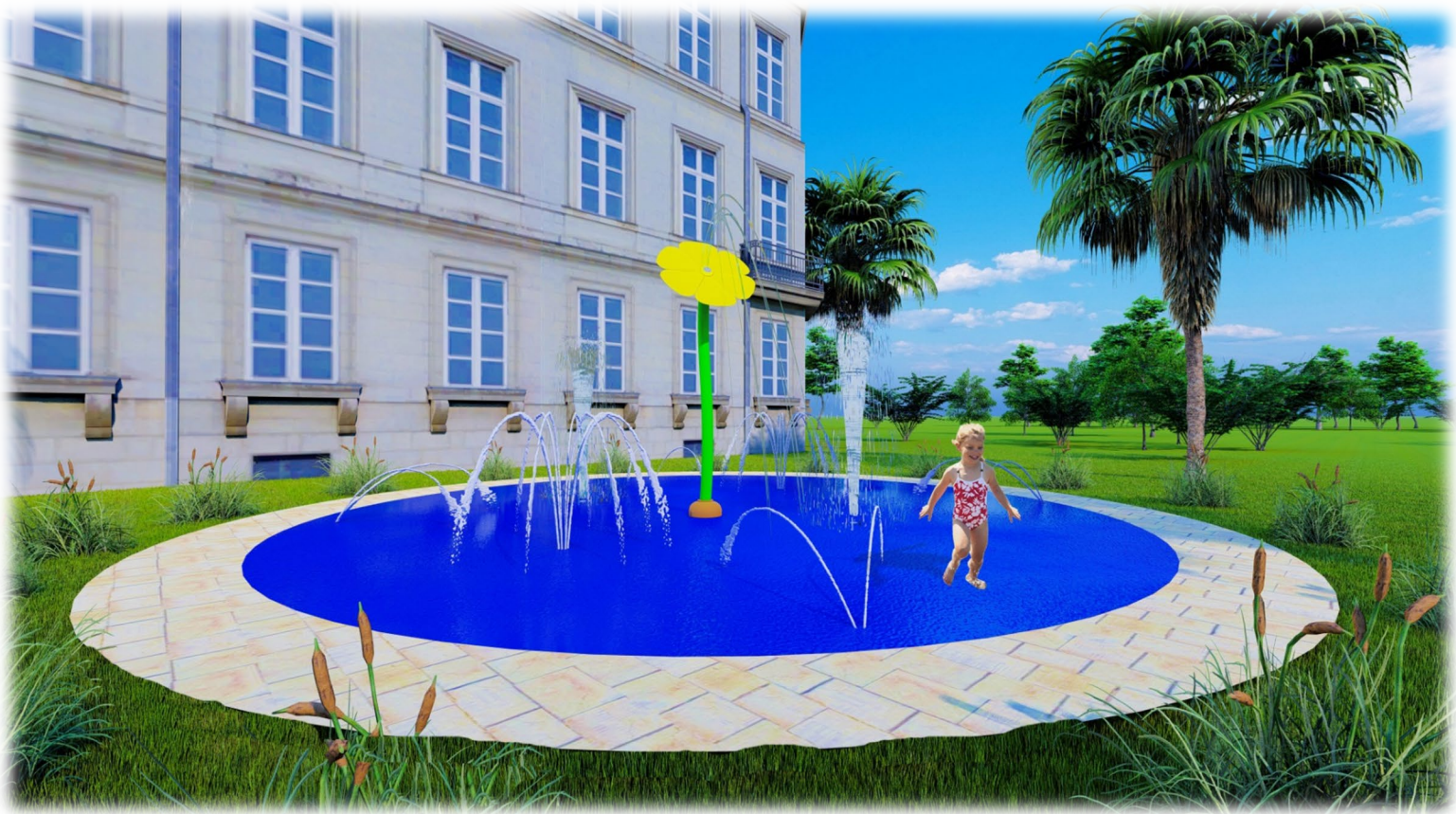
Item # 400-2B

- Aqua Super Snake
- Aqua Geysers (2)
- Aqua Spider (3)
- Aqua Split Stream (3)





## 400 Aqua Pad 2C

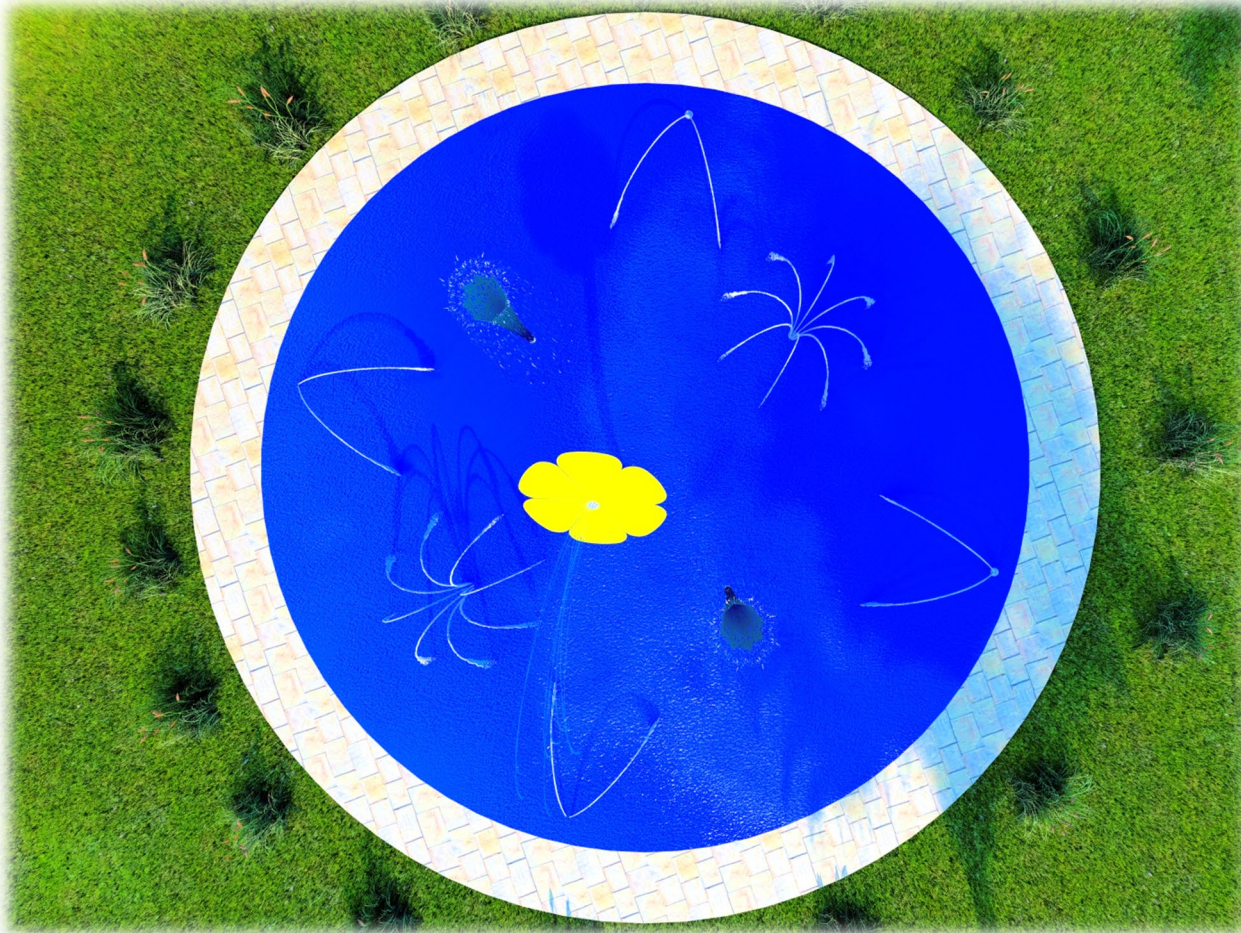


- Aqua Acrylic Flower
- Aqua Spider (2)
- Aqua Geyser (2)
- Aqua Split Stream (4)

Item # 400-2C



## 400 Aqua Pad 2C



- Aqua Acrylic Flower
- Aqua Spider (2)
- Aqua Geyser (2)
- Aqua Split Stream (4)

Item # 400-2C



## 400 Aqua Pad 3A

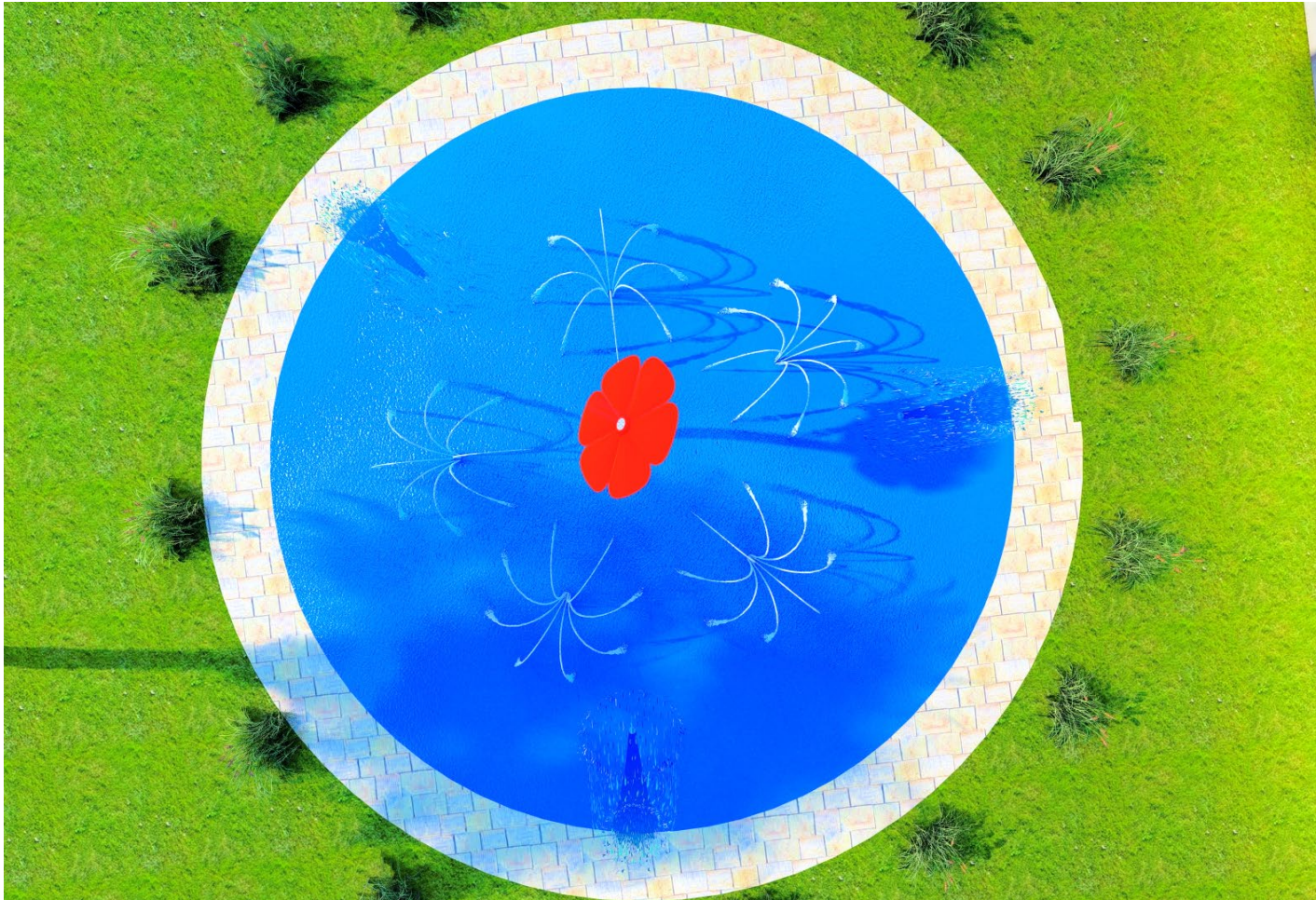


- Aqua Acrylic Flower
- Aqua Spiders (5)
- Aqua Geyser (3)

Item # 400-3A



## 400 Aqua Pad 3A



Item # 400-3A

- Aqua Acrylic Flower
- Aqua Spiders (5)
- Aqua Geyser (3)



## 400 Aqua Pad 3B

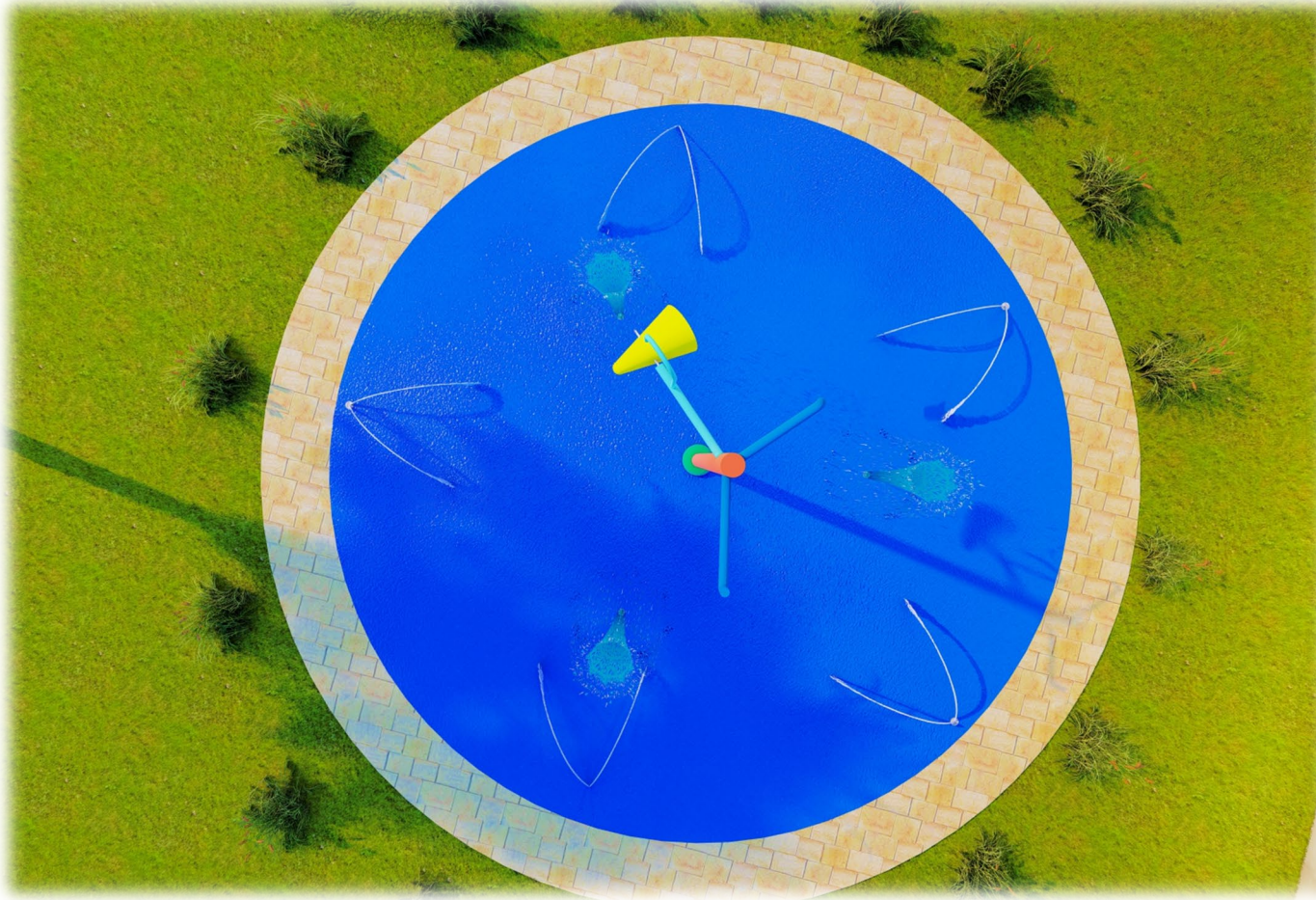


- Triple Tree
- Aqua Split Stream (5)
- Aqua Geyser (3)

Item # 400-3B



## 400 Aqua Pad 3B



- Triple Tree
- Aqua Split Stream (5)
- Aqua Geyser (3)

Item # 400-3B



## 400 Aqua Pad 3C

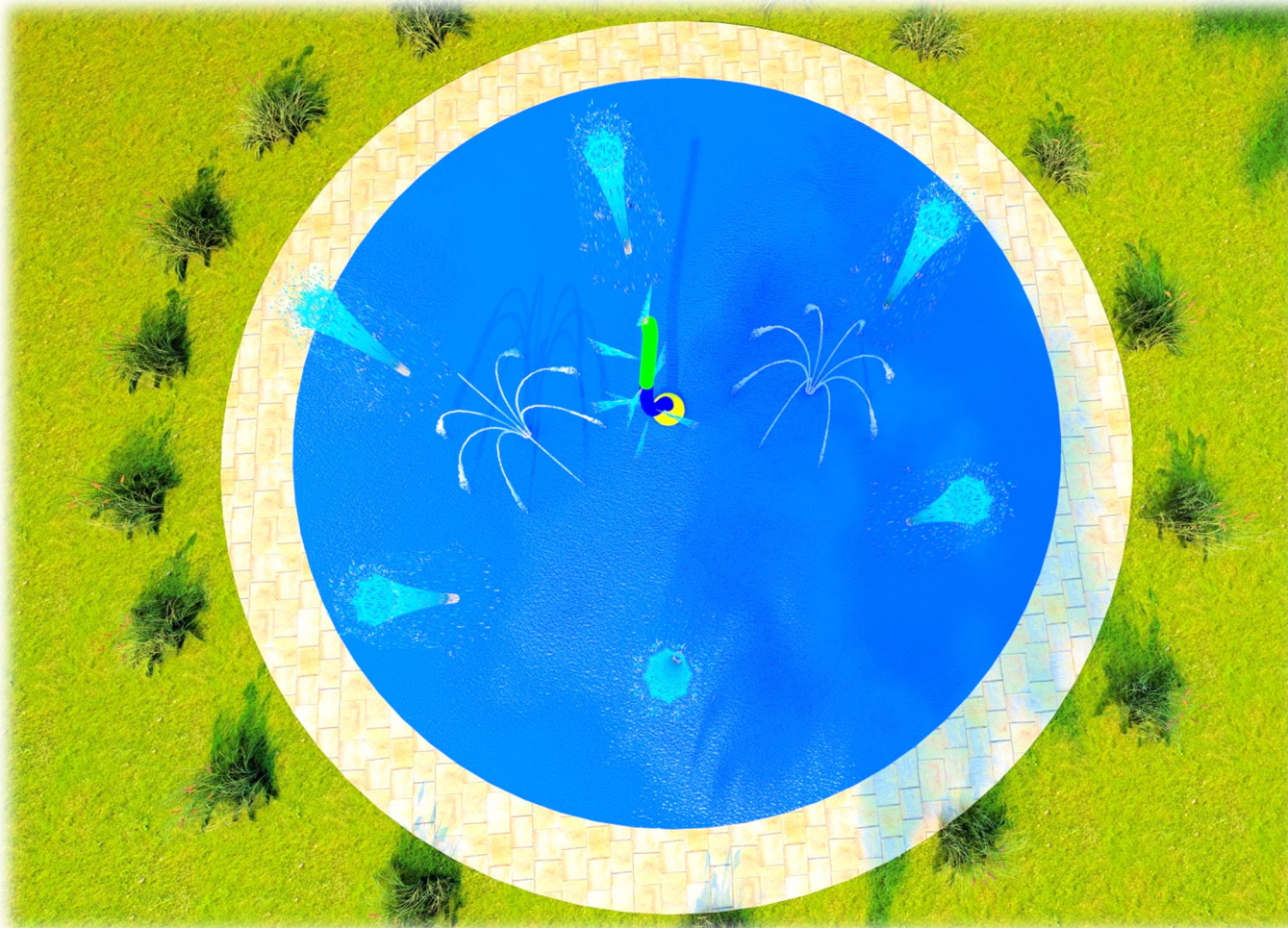


- Aqua Super Snake
- Aqua Spider (2)
- Aqua Geyser (6)

Item # 400-3C



## 400 Aqua Pad 3C



Item # 400-3C

- Aqua Super Snake
- Aqua Spider (2)
- Aqua Geyser (6)





# AQUAWORX color chart

color chart



Custom Colors available upon request.  
 Printed colors may vary from actual samples. \*Colors for metal components only.