

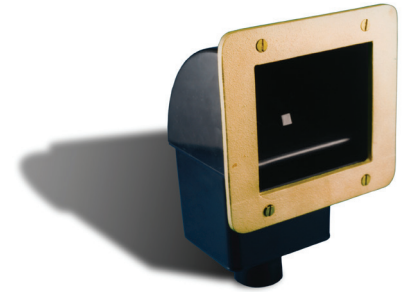
FSK Series

Front Access Skimmer

FSK-150J is designed to remove floating surface debris. The skimmer is engineered for pools with thinner walls utilizing heavy-duty ABS construction. Includes floating weir with removable trash basket and cast bronze face plate with natural finish.

Specification:

FSK-150J Front Access Skimmer; consists of a heavy-duty ABS housing with a floating weir and removable plastic debris basket (removable through front opening of skimmer). Faceplate is of cast bronze with a natural finish.

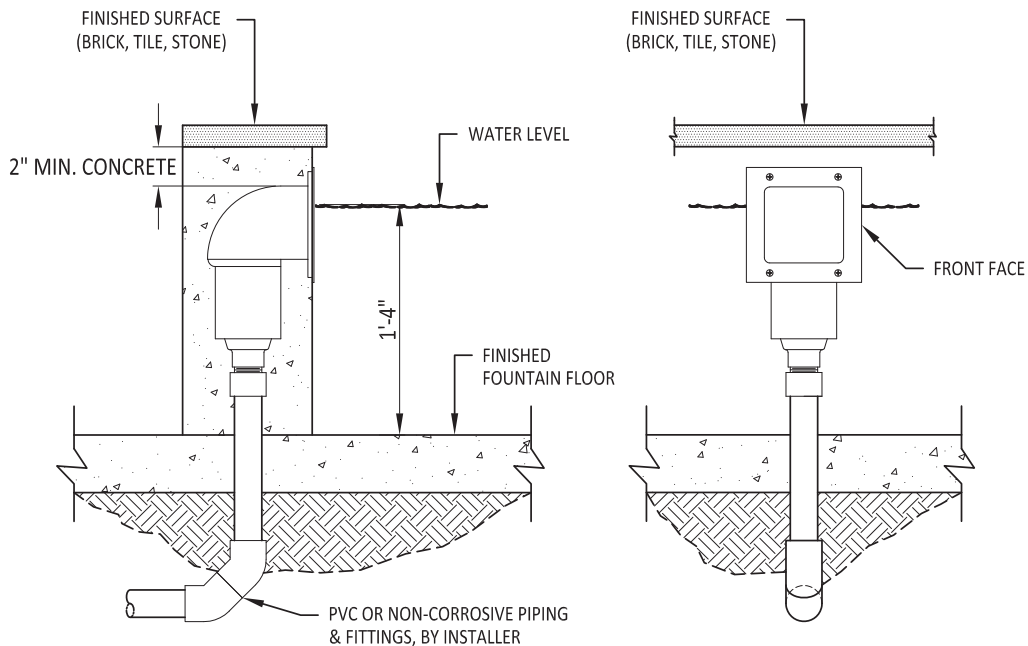


Details

TECHNICAL NOTES:

1. FLOW RATES SHOWN AT 16" OPERATING WATER DEPTH. CONTACT FOUNTAIN PEOPLE FOR SHALLOWER APPLICATIONS.

Model Number	NPT	Minimum Flow Rate	Maximum Flow Rate
FSK-150J	1½"	10 GPM	30 GPM



SIDE VIEW

ELEVATION VIEW

2021-01