

# FWD-B Series

## FWD-B Series Wall Mounted Overflow Fitting

FWD-B Series Wall Mounted Overflow Fitting provides a wall mounted overflow device to maintain proper water level in fountain pool basin.

### Specification:

FWD-B Series Wall Mounted Overflow Fitting; consists of a bronze housing with an integral waterstop flange and a large full-face removable strainer grill. The housing includes a female threaded connection and a permanently affixed bonding lug. Construction is cast bronze and brass with a natural finish.

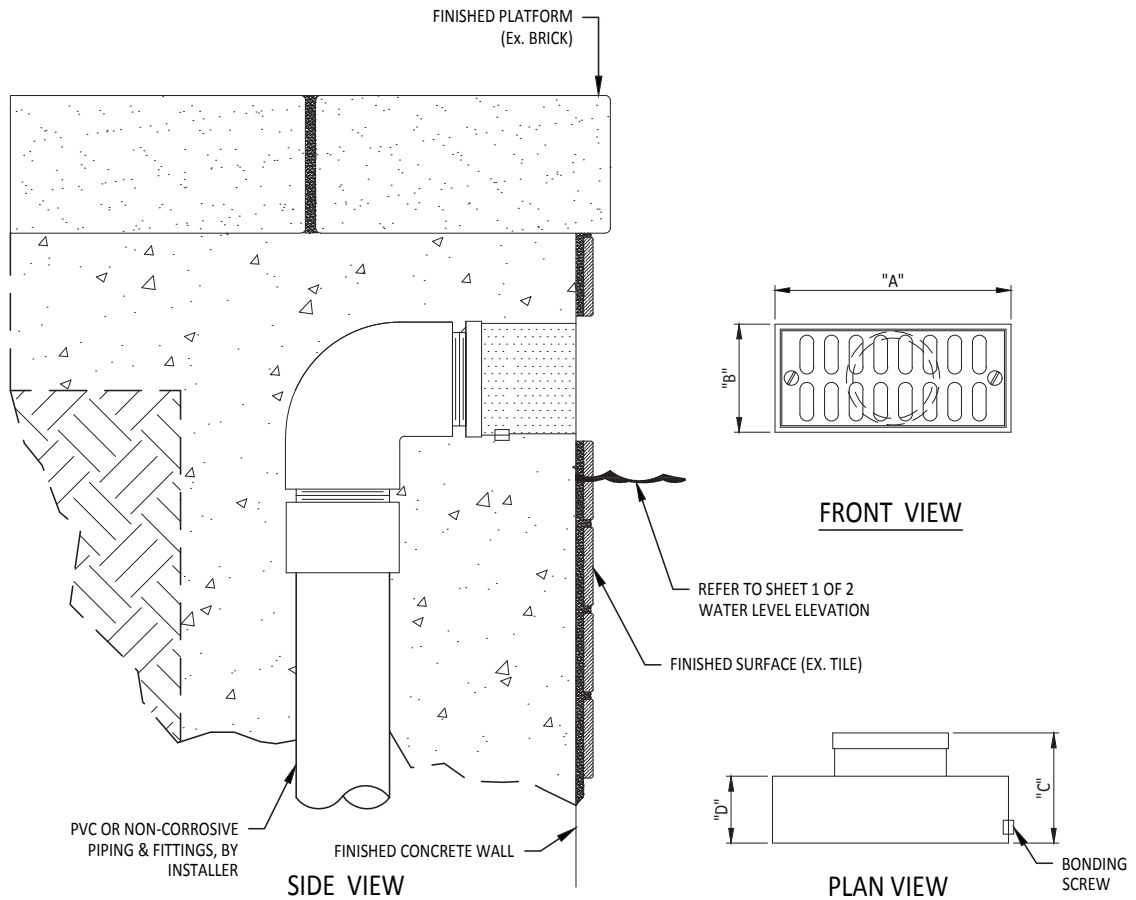


## Details

### TECHNICAL NOTES

1. WATERSTOP MUST BE BONDED UTILIZING A #8 AWG SOLID COPPER WIRE.
2. THIS FITTING IS WATER LEVEL DEPENDENT.

Model Number	NPT	Dimensions				
		A	B	C	D	E
<b>FWD-200B</b>	2"	6"	2¼"	2⅝"	1½"	8"
<b>FWD-200SB</b>	2"	9¼"	1½"	3⅞"	2"	11¼"
<b>FWD-300B</b>	3"	12"	4"	3¼"	1⅜"	14"



2021-01