

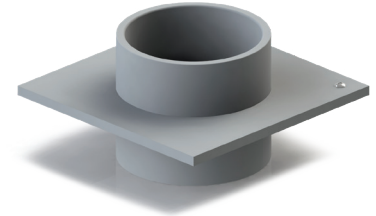
FWS-P Series (PVC)

PVC Waterstop Fitting

FWS-P Series (PVC) Waterstop Fitting provides a flush mount, “pour-in-place” embedded fitting, that allows a direct connection between in-pool components. Fitting may be floor or wall mounted.

Specification:

FWS-P Series (PVC) Waterstop Fitting; fabricated from Schedule 80 PVC materials, waterstop flange shall be adhesively bonded to PVC components. PVC socket connection (bottom). PVC pipe connection (top).

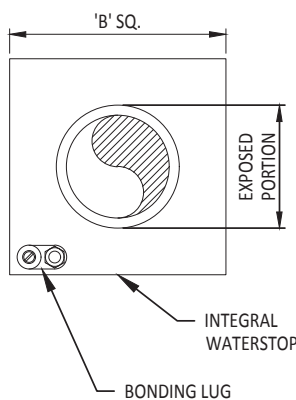


Details

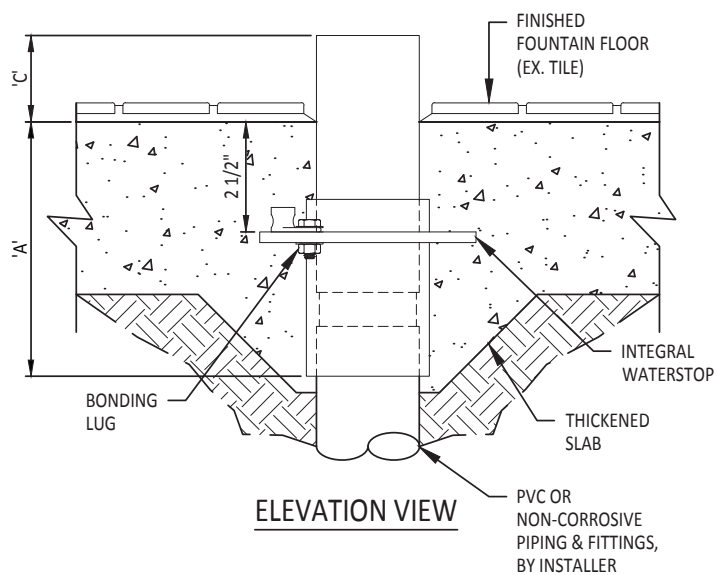
TECHNICAL NOTES

- 1) EXTENDED PIPE LENGTHS AVAILABLE ON SPECIAL ORDERS.
- 2) INCREASED PIPE SIZES AVAILABLE UPON REQUEST; CONSULT THE FOUNTAIN PEOPLE.

Model Number	Pipe Size	Dimensions		
		A	B	C
FWS-P-150	1½"	5⅝"	4"	1½"
FWS-P-200	2"	5⅞"	5"	2"
FWS-P-250	2½"	6⅝"	6"	2½"
FWS-P-300	3"	6¾"	8"	3"
FWS-P-400	4"	7⅝"	9"	4"
FWS-P-600	6"	8⅞"	12"	6"
FWS-P-800	8"	15"	14"	8"
FWS-P-1000	10"	21"	16"	10"
FWS-P-1200	12"	24"	18"	12"



PLAN VIEW



ELEVATION VIEW

PVC OR
NON-CORROSIVE
PIPING & FITTINGS,
BY INSTALLER

2021-01