

# WLS-CG SERIES

## Water Level Probe

WLS-CG Series a compact and flexible level probe for measuring the level of conductive liquids, i.e overflow, dry run protection or pump control. A total measurements system consist of a multiple probe-head 1-5 electrodes and a control unit. The electrode length can be freely defined by means of electrode extension units - with or without isolation suitable for use in storage tanks, equalizer tanks, or reservoirs.

### Specification:

WLS-CG Series, polypropylene head construction, 3 or 5 probe electrical connections, electrode are stainless steel, pipe thread 1-1/2", cable connection screw terminals.



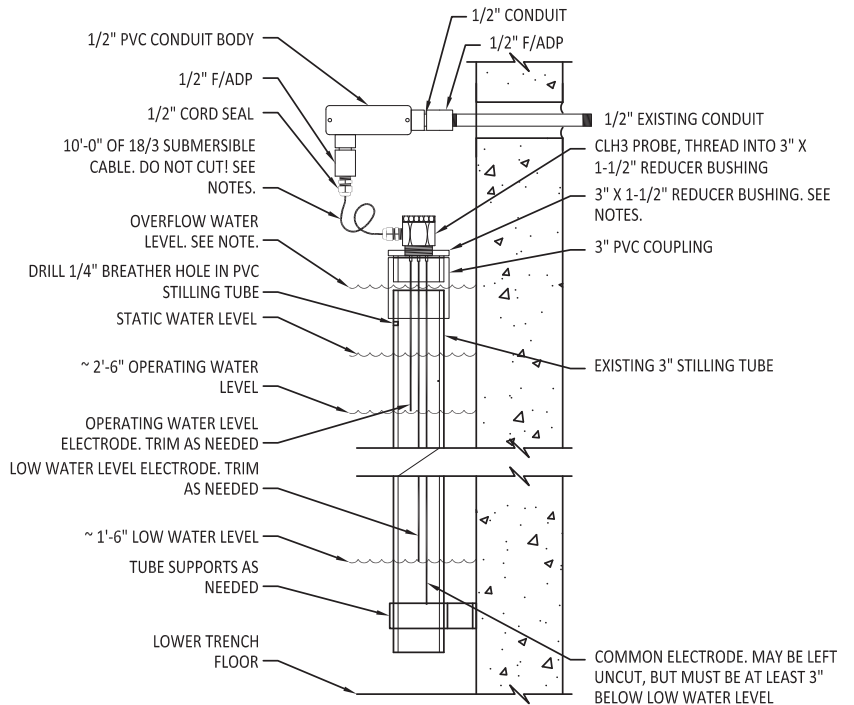
## Details

### TECHNICAL NOTES

- DO NOT CUT 18/3 CABLE FROM CONDUIT BODY TO CLH3 PROBE. CABLE ALLOWS FOR MAINTENANCE REMOVAL.
- DO NOT GLUE 3" X 1-1/2" REDUCER BUSHING! MUST BE REMOVABLE FOR SERVICING. GENTLY PRESSFIT INTO PLACE. (+/-1") IS ACCEPTABLE UPON EACH REMOVAL/REPLACEMENT.
- TRIM ELECTRODES TO LENGTH. TIP OF ELECTRODE IS ACTIVATION POINT.
- ALLOW SUFFICIENT CLEARANCE ABOVE CLH3 ASSEMBLY FOR REMOVAL.
- DO NOT ALLOW OVERFLOW WATER LEVEL TO EXCEED HEIGHT OF 3" COUPLING.

Model Number	Mounting Type	Conduit Connection	Primary Voltage	Probe Voltage	Probe Current
WLS-CG-3	3" PVC Riser	1 1/2"	120 VAC	5 VAC	2 mA Max
WLS-CG-5	5" PVC Riser	1 1/2"	120 VAC	5 VAC	2 mA Max

Warning: Do not run sensor cable in conduit with any other conductors.



PROFILE VIEW

2021-01