

# CAS Series

## Cascade Nozzle:

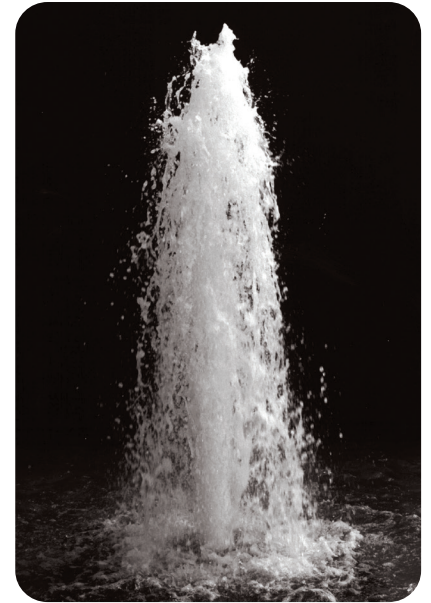
CAS Series nozzle creates a highly aerated “pine tree” shaped geyser of water.

## Specification:

CAS Series Cascade Nozzle is a precision machined brass construction with female threaded inlet. It is a water level dependent effect that is subject to creating wave action in a pool. When used in smaller or symmetrical pools, a wave dampener is recommended.

- Water Level Dependent - Yes
- Wind Resistance - Very Good
- Sound Level - High
- Clogging Potential - Low
- Splash Radius - 1.5

Material: Machined brass  
Finish: Natural brass



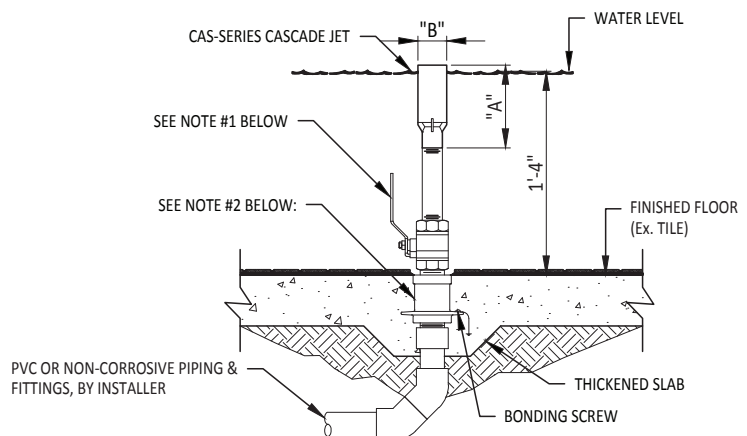
## Details

Model Number	NPT	Inches		Feet	Spray Height									
		A	B		1	2	4	6	8	10	15	20	25	
CAS-100	1"	6	2¼	GPM	15	21	29	37						
				Head Ft.	12	21	35	51						
				Spread - Ft.	.75	1	2	3						
CAS-150	1½"	7	3	GPM			48	60	65	70				
				Head Ft.			36	55	62	71				
				Spread - Ft.			2	3	4	4.5				
CAS-200	2"	8	4¼	GPM			70	74	80	88	100			
				Head Ft.			21	29	37	45	55			
				Spread - Ft.			2	2.5	3	3.5	4.5			
CAS-300	3"	9	5	GPM			110	127	142	162	190	220	240	
				Head Ft.			14	19	28	37	53	72	80	
				Spread - Ft.			2.5	2.75	3	3.5	5	8	11	

Highlighted sections indicate optimum performance

### TECHNICAL NOTES:

1. BALL VALVE AS REQUIRED PER DESIGN FOR DISCHARGE FLOW CONTROL.
2. WATERSTOP FITTING REQUIRED FOR CONCRETE POUR. SIZE BASED ON PIPING AND NOZZLE SIZE. (SEE CATALOG ITEM: FWS-SERIES)
3. TYPICAL WATER DEPTH SHOWN MAY VARY. CONTACT FOUNTAIN PEOPLE FOR SHALLOWER APPLICATIONS.
4. MAY REQUIRE WAVE BAFFLE FOR SYMMETRICAL SHAPED POOLS. CONSULT FOUNTAIN PEOPLE FOR SPECIFIC APPLICATIONS.
5. THIS NOZZLE IS WATER LEVEL DEPENDENT.



2021-01



**fountain people**  
A PLAYCORE Company

*Creating compelling guest experiences with water.*

### Fountain People, Inc.

4600 HWY 123, San Marcos, TX 78666 | (512) 392-1155  
info@fountainpeople.com | www.fountainpeople.com