

CHN Series

Chandelier™ Nozzle:

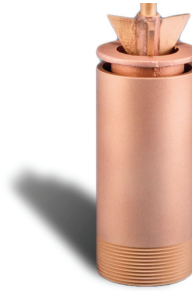
CHN Chandelier Nozzle provides an ellipsoidal sphere of water droplets.

Specification:

CHN Chandelier Nozzle, bronze and brass construction, water level dependent spray effect that requires a constant water level for proper operation. This nozzle is subject to wind. Allow extra area to capture splash or use a wind control device. MNPT connection.

- Water Level Dependent - Yes
- Wind Resistance - Poor
- Sound Level - Moderate
- Clogging Potential - Low
- Splash Radius - 2.0

Material: Machined cast bronze and brass
Finish: Natural bronze and brass



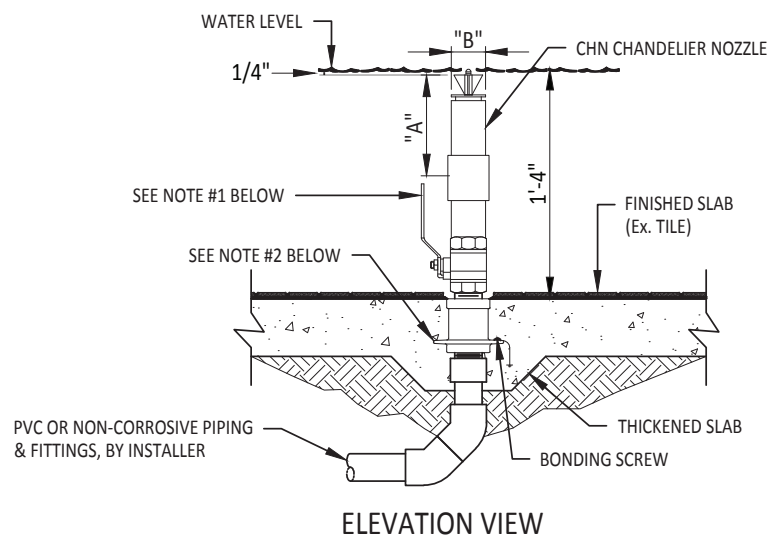
Details

Model Number	NPT	Inches		Feet	Spray Height						
		A	B		2	3	4	5	6	7	8
CHN-200	2"	7	2 3/8	GPM	65	75	90	100	110	115	125
				Head Ft.	3	4	6	7	8	9	11
				Spread - Ft.	4	6	8	9	10	11	12

Highlighted sections indicate optimum performance

TECHNICAL NOTES:

1. BALL VALVE AS REQUIRED PER DESIGN FOR DISCHARGE FLOW CONTROL.
2. WATERSTOP FITTING REQUIRED FOR CONCRETE POUR. SIZE BASED ON PIPING AND NOZZLE SIZE. (SEE CATALOG ITEM: FWS-SERIES)
3. TYPICAL WATER DEPTH SHOWN MAY VARY. CONTACT FOUNTAIN PEOPLE FOR SHALLOWER APPLICATIONS.
4. THIS NOZZLE IS WATER LEVEL DEPENDENT.



2021-01



fountain people™
A PLAYCORE Company

Creating compelling guest experiences with water.

Fountain People, Inc.

4600 HWY 123, San Marcos, TX 78666 | (512) 392-1155
info@fountainpeople.com | www.fountainpeople.com