

FAN Series

Fan Nozzle:

FAN Series Fan Nozzle creates a fan-shaped sheet of water.

Specification:

FAN Series Fan Nozzle, machined cast bronze construction, water level independent spray effect, integral adjustment swivel up to 15° off vertical that provides adjustability to create different fan shapes. FNPT connection.

- Water Level Dependent - No
- Wind Resistance - Fair
- Sound Level - Low
- Clogging Potential - Low
- Splash Radius - 1.5

Material: Machined cast bronze
Finish: Natural bronze



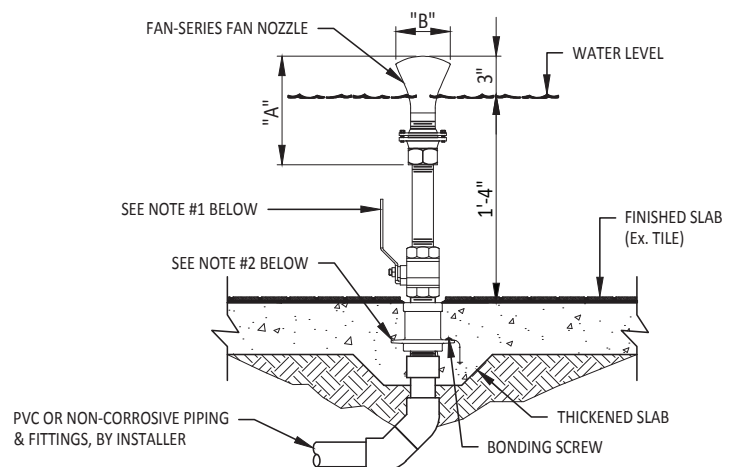
Details

Model Number	NPT	Inches		Degrees Above Horizontal	Spray/Throw Performance				
		A	B		Throw - Ft.	Rise - Ft.	Spread - Ft.	GPM - Ft.	Head - Ft.
FAN-150	1½"	8 ¼	4 ¼	30°	6	2	7	34	4
					8	3	9	41	10
					10	4	11	48	16
					14	5	15	55	22
FAN-150	1½"	8 ¼	4 ¼	45°	8	2	8	45	9
					12	3	12	54	16
					16	4	16	63	23
					20	5	20	72	30
FAN-200	2"	11½	5¾	30°	6	2	7	38	7
					9	3	10	47	13
					12	4	13	56	19
					15	5	17	65	25
FAN-200	2"	11½	5¾	45°	8	2	8	44	9
					12	3	12	56	16
					16	4	16	68	23
					20	5	20	80	30

Highlighted sections indicate optimum performance

NOZZLE REQUIREMENTS:

1. BALL VALVE AS REQUIRED PER DESIGN FOR DISCHARGE FLOW CONTROL.
2. WATERSTOP FITTING REQUIRED FOR CONCRETE POUR. SIZE BASED ON PIPING AND NOZZLE SIZE. (SEE CATALOG ITEM: FWS-SERIES)
3. TYPICAL WATER DEPTH SHOWN MAY VARY. CONTACT FOUNTAIN PEOPLE FOR SHALLOWER APPLICATIONS.
4. THIS NOZZLE IS WATER LEVEL INDEPENDENT.



ELEVATION VIEW

2021-01