

# FLN Series

## Flood Nozzle:

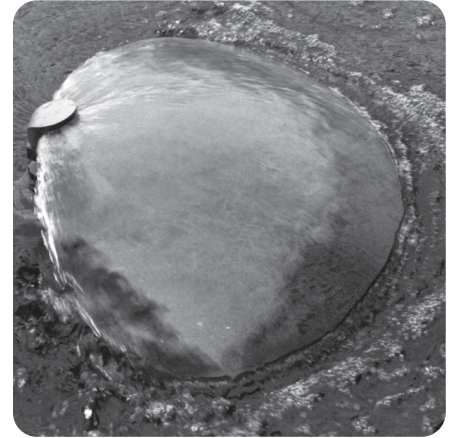
FLN Series Flood Nozzle provides a transparent, fan-shaped sheet of water. May be mounted in a vertical or horizontal position.

## Specification:

FLN Series Flood Nozzle, one piece brass construction, water level independent spray effect. MNPT connection.

- Water Level Dependent - No
- Wind Resistance - Poor
- Sound Level - Low
- Clogging Potential - Moderate
- Splash Radius - 1.0

Material: Machined brass  
Finish: Natural brass

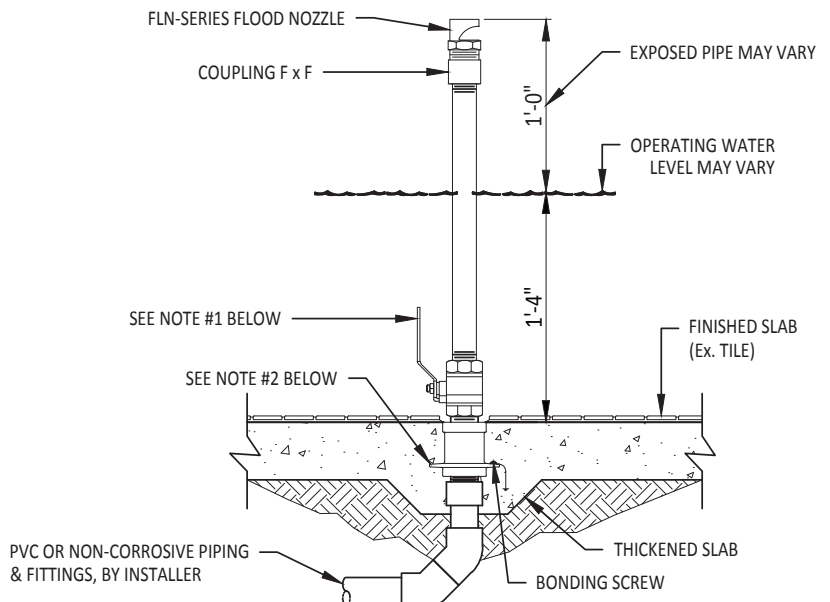
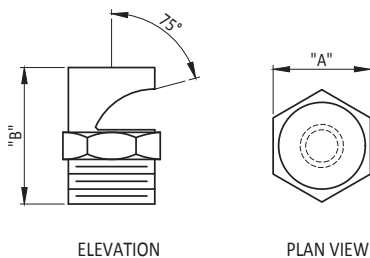


## Details

Model Number	NPT	Dimensions		Projection in Feet	Spray/Throw Performance							
		A	B		2	4	6	8	10	12	14	16
FLN-050	½"	⅞"	2"	GPM	3	4	5					
				Head Ft.	4	5	8					
				Spread Ft.	2	5	8					
				Height In.	7	11	20					
FLN-075	¾"	1½"	2⅞"	GPM	5	9	10	12	14			
				Head Ft.	4	6	8	9	11			
				Spread Ft.	5	7	9	11	14			
				Height In.	7	11	18	24	29			
FLN-100	1"	1⅞"	3⅝"	GPM	10	17	23	27	30	35	38	41
				Head Ft.	4	5	7	9	11	13	16	19
				Spread Ft.	7	8	10	12	14	16	18	20
				Height In.	7	10	16	22	26	30	33	36

### NOZZLE REQUIREMENTS:

1. BALL VALVE AS REQUIRED PER DESIGN FOR DISCHARGE FLOW CONTROL.
2. WATERSTOP FITTING REQUIRED FOR CONCRETE POUR. SIZE BASED ON PIPING AND NOZZLE SIZE. (SEE CATALOG ITEM: FWS-SERIES)
3. TYPICAL WATER DEPTH SHOWN MAY VARY. CONTACT FOUNTAIN PEOPLE FOR SHALLOWER APPLICATIONS.
4. THIS NOZZLE IS WATER LEVEL INDEPENDENT.
5. FINE SCREENING AT PUMP, HALF THE DIAMETER OF JET ORIFICE OR SMALLER TO MINIMIZE NOZZLE CLOGGING IS RECOMMENDED.



2021-01