

Specifications

Model Number: W346

Interactive Water Effect: Shall be ribbon-like solid stream jets spin around the shaft as it is rotated.

Head: High density molded foam on a stainless steel frame.

Shaft: Straight 6" type 304 stainless steel pipe with machined type 304 base plate.

Handles: Type 304 stainless steel.

Joint: Delrin®.

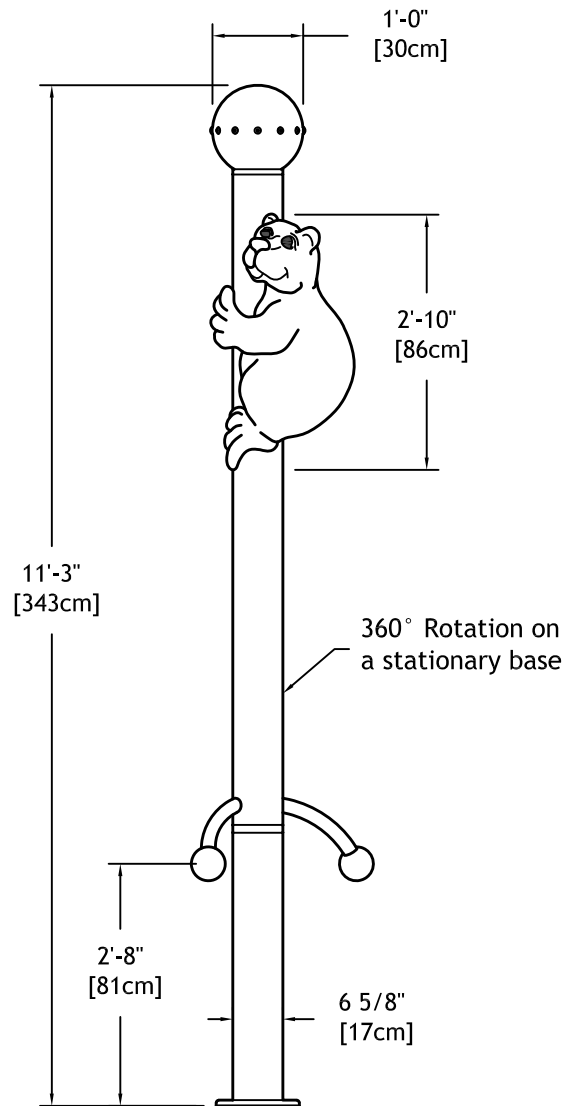
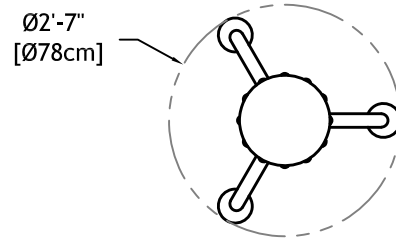
Anchor Base: Type 304 stainless steel machined to mate with shaft base plate with grounding connection and 3" FPT inlet. Supplied with 4, 3/8" x 12" x 2" 18/8 stainless steel anchor bolts with two leveling nuts and washers per bolt and wood pour template.

Gasket: 70 durometer EPDM o-ring.

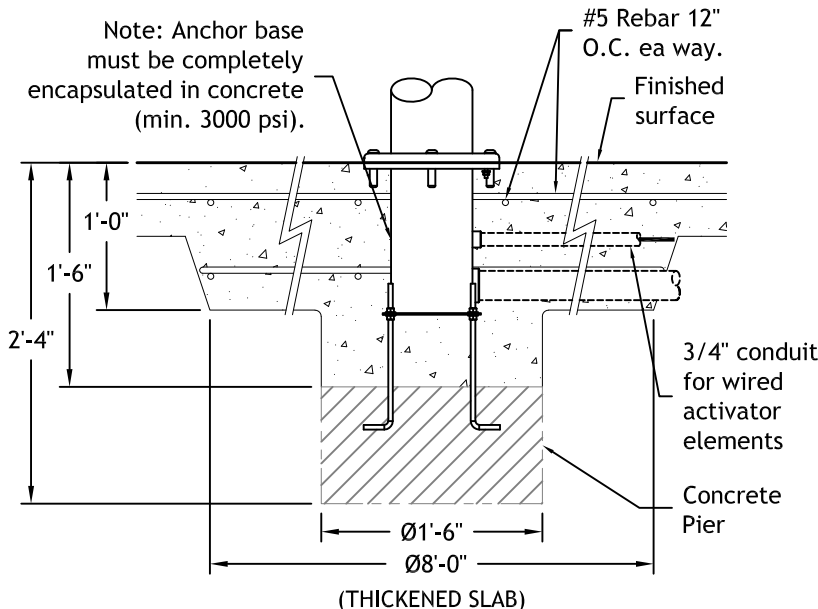
Fasteners: Tamper-resistant 18/8 stainless steel.

Finish: Textured elastomeric urethane with a UV and chlorine resistant sealer coat.

Nozzles: 12 stainless steel precision jets.



Anchor Base



Hydraulic Requirements

□ W346

GPM	psi
30-40	6



Dizzy Bear Maypole™

Fountain People, Inc. - PO Box 807 - 4600 Highway 123 - San Marcos, Texas 78667-0807
Phone (512) 392-1155 - Fax (512) 392-1154 - www.waterodyssey.com

01-10-19

W346